

LED TRUPROOF LIGHTING

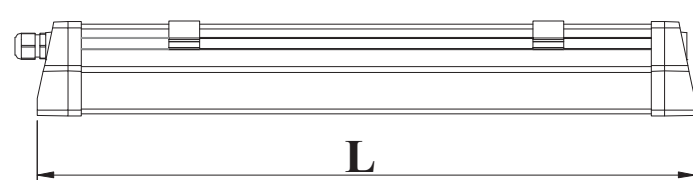


Product Features

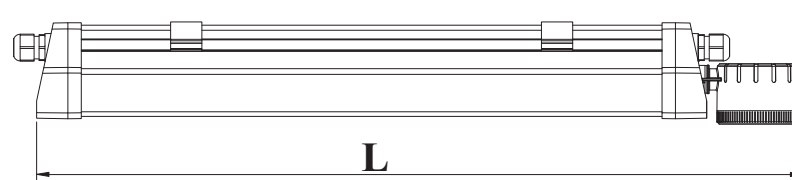
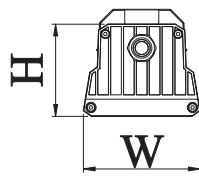
- Water-proof /Dust-proof/ Corrosion-proof
- Dimmable: DALI, 0-10V
- Energy-saving: Save up to 50% energy
- Emergency sensor: 90 Minutes
- Long service life: 10 Years
- Microwave sensor: Scope/Time/LUX adjustable
- Easy installation: Connect wire through end caps



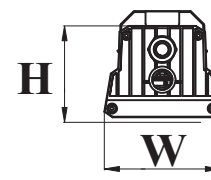
Product Dimension



Standard



Microwave sensor & Emergency light



Product Specification

	Dimension (L*W*Hmm)	Model	Power (W)	Weight (kg)	LPW (lm/w)	CRI	CCT (K)
Standard	600*109*86	TRU20S6K	20	1.8	110+	80+	2700/4000/6000
	1200*109*86	TRU45S6K	45	3.0	110+	80+	2700/4000/6000
	1500*109*86	TRU60S6K	60	4.2	110+	80+	2700/4000/6000
Dimming	600*109*86	TRU20D6K	20	1.8	110+	80+	2700/4000/6000
	1200*109*86	TRU45D6K	45	3.0	110+	80+	2700/4000/6000
	1500*109*86	TRU60D6K	60	4.2	110+	80+	2700/4000/6000
Emergency	687*109*86	TRU20E6K	20	1.8	110+	80+	2700/4000/6000
	1287*109*86	TRU45E6K	45	3.0	110+	80+	2700/4000/6000
	1587*109*86	TRU60E6K	60	4.2	110+	80+	2700/4000/6000
Sensor	687*109*86	TRU20SR6K	20	1.8	110+	80+	2700/4000/6000
	1287*109*86	TRU45SR6K	45	3.0	110+	80+	2700/4000/6000
	1587*109*86	TRU60SR6K	60	4.2	110+	80+	2700/4000/6000

Product Technical Information

Electrical

Input voltage: 220-240V
 Input frequency: 50 Hz
 Power Factor: >0.95
 Total Harmonic Distortion: < 20%

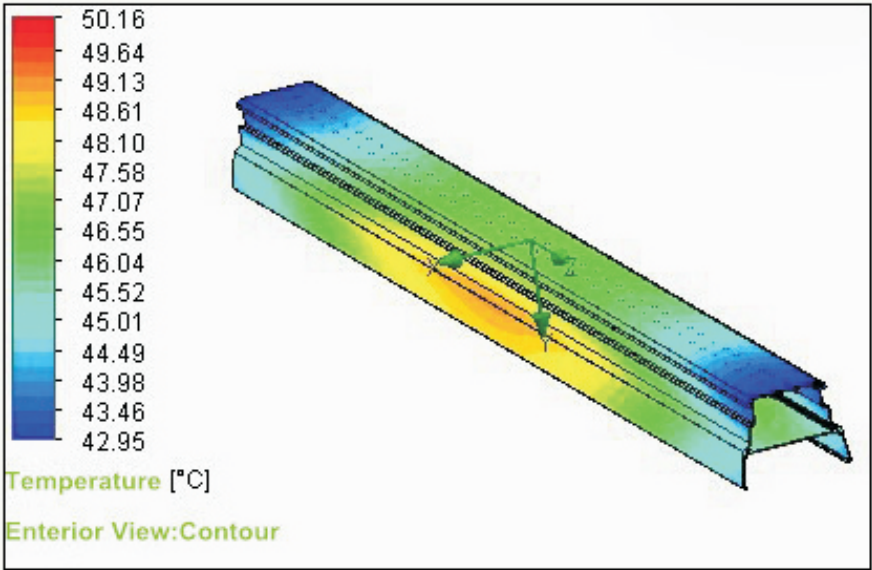
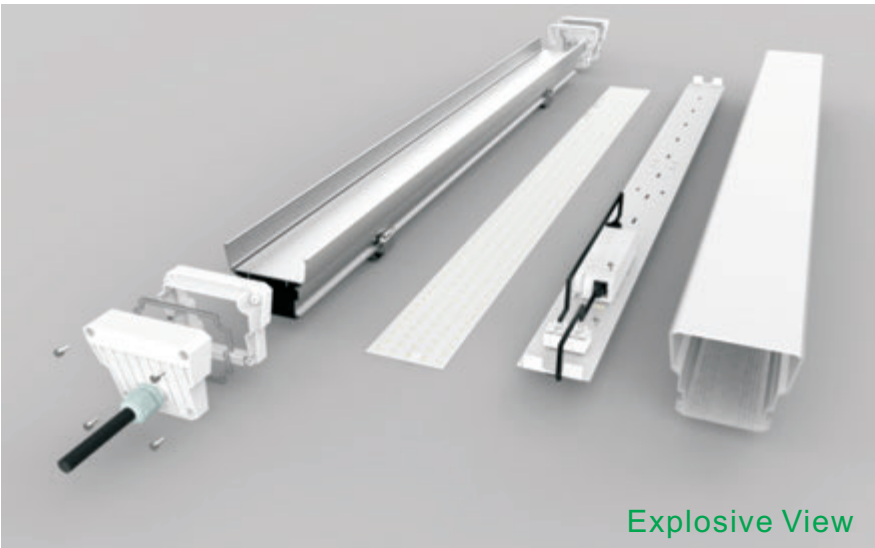
Material:

Body: PC package AL
 End caps: PC+ABS
 Mounting Brackets: Rustless Steel
 Ambient temperature: -20~40°C

Applications :

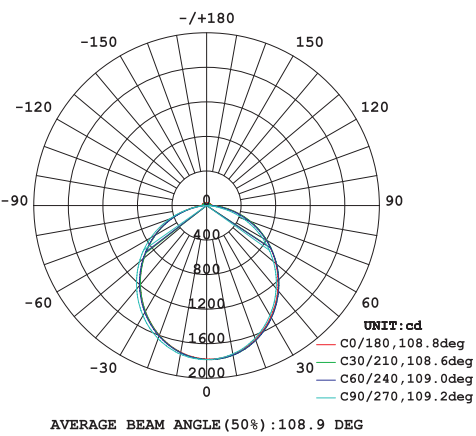
- Workshop
- Parking lot
- Outdoor ceiling
- Public area
- Food production plant
- Underpass

Detailed description

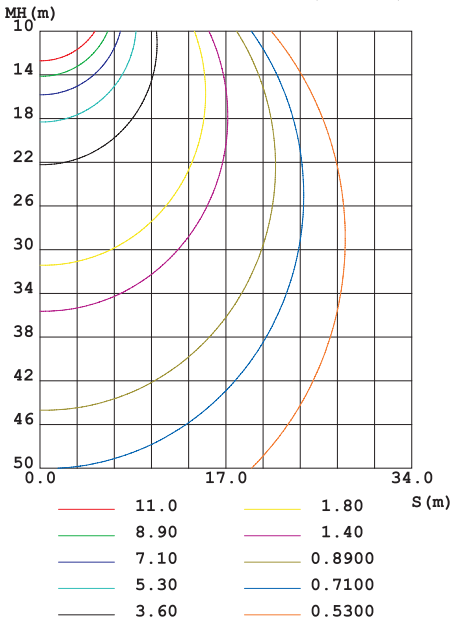


Light distribution curve

LUMINOUS INTENSITY DISTRIBUTION DIAGRAM

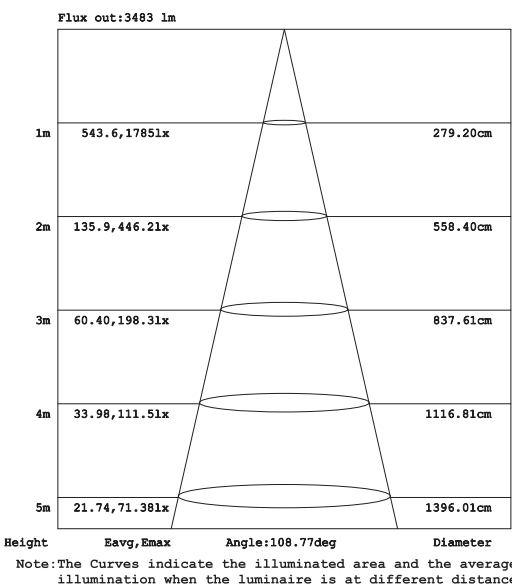


C0 PLANE ISOLUX DIAGRAM (UNIT:lx)

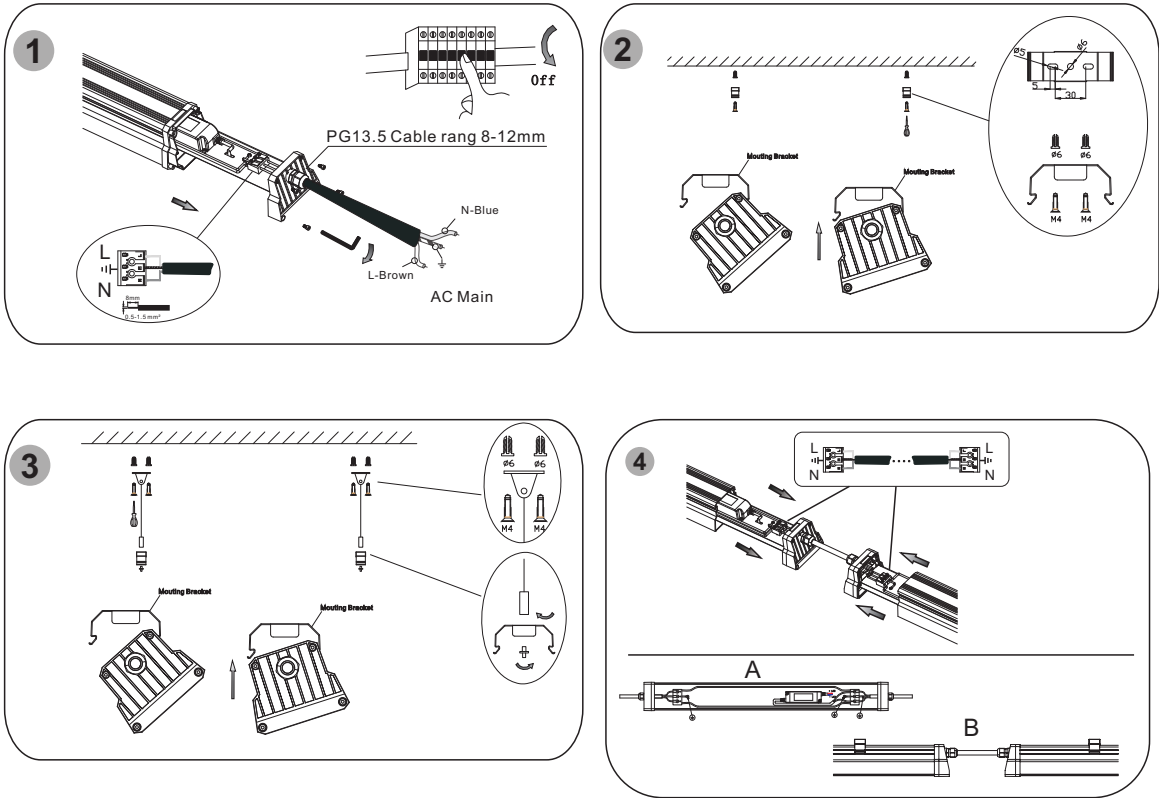


LUMINANCE cd/(m2)		
G (DEG)	C0/180	C90/270
85	12041	6580
80	12139	10463
75	13249	12916
70	14111	14425
65	14783	15313
60	15316	15905
55	15757	16334
50	16159	16695
45	16527	16999

AAI Figure



Installation

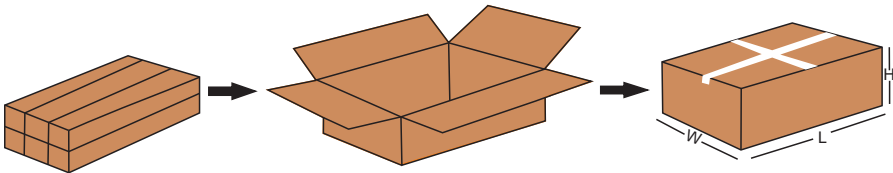


- CONNECT WIRE**
- STEP 1:** Switch off the power, use a screwdriver to open the caps, then take out the sheet metal.
- STEP 2:** Bring in customer supplied cord make the following electrical connections to the lever nuts:
- a. Connect the brown luminaire lead to the live lead on the terminal.
 - b. Connect the blue luminaire lead to the neutral lead on the terminal.
 - c. Connect the green/yellow luminaire lead to the ground lead on the terminal.
 - d. Close the end cap and tight the water-proof terminal and screws carefully. **See Figure 1**

- SURFACE MOUNTING**
- For ceiling mount using mounting brackets applications. **See figure 2**

- PENDANT MOUNTING**
- Chains are NOT provided with luminaire, they are sold separately. **See figure 3**
- For 1500mm luminaire, then 3pcs chains and 3pcs rackets are needed.
- NOTE :** When connecting multiple luminaires together, bring leads from adjoining luminaires into the first luminaire through end caps wiring knockouts and make wiring connections to the lever nuts. **See Figure 4** (A is internal connection figure while B is external connection figure) Multiple luminaires connection suitable for both surface mounting and pendant mounting. Please refer to above installation procedures.

Package



Model	TRU20S/D/E/SR	TRU45S/D/E/SR	TRU60S/D/E/SR
Light Dimension	600*109*86mm	1200*109*86mm	1500*109*86mm
Light Net weight	1800g	3000g	4200g
QTY/ Carton	6pcs	6pcs	6pcs
CTN dimension	670*395*267mm	1270*395*267mm	1570*395*267mm
CTN gross weight	13.5kg	23kg	32.5kg